

6453X Series Multiport RJ45 8P Top Entry

General specifications

Insulator material	Polyester w/ glass fiber , UL94V-0, color: black
Contact material	Phosphor bronze
Current rating	1.5 A
Voltage rating	125 VAC
Contact resistance	35 mΩ max.
Insulator resistance	1000 MΩ min.
Dielectrical withstanding	1000 VAC for 1 min
Operating temperature	-40 °C to +85 °C
Soldering	Lead free wave soldering process
Durability	750 cycles

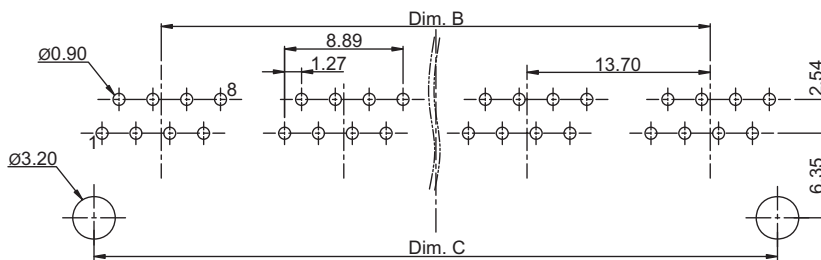
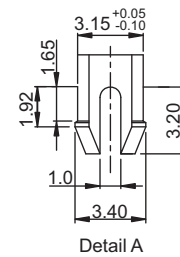
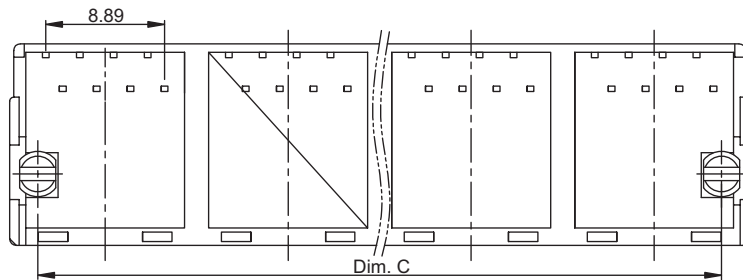
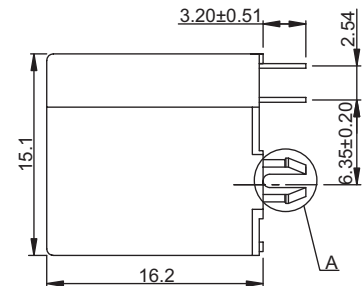
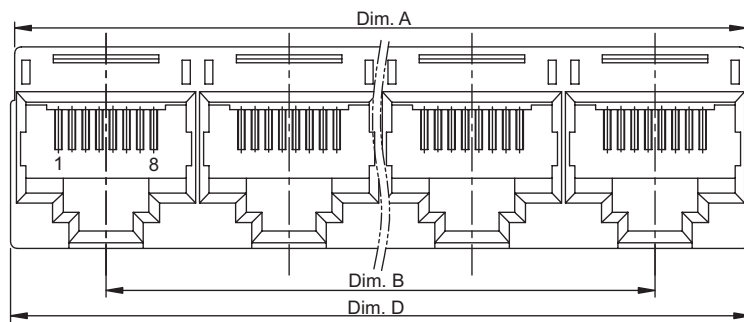
Mating parts series



RoHS
compliant

Mechanical dimensions

Unit: mm



Recommended
P.C.B. layout

Ports	Dim. A	Dim. B	Dim. C	Dim. D
2	27.40	13.70	23.80	28.00
4	54.80	41.10	51.20	55.40
5	68.50	54.80	64.90	69.10
6	82.20	68.50	78.60	82.80
8	109.60	95.90	106.00	110.20

Tolerances

Linear	X	± 0.20
	.XX	± 0.15
	.XXX	± 0.10

Part numbering guide

6453 — B — C

Series

Ports

Contact plating

B = 2 H = 8

C = 3 μ" gold

K = 50 μ" gold

D = 4

F = 6 μ" gold

E = 5

J = 30 μ" gold

F = 6

* standard

