

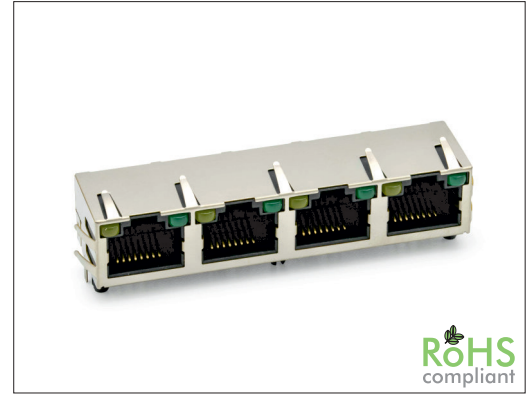
# 6782X Series

# Multiport RJ45 8P LED Side Entry Shielded

## General specifications

Insulator material	High temperature plastic, UL94V-0
Contact material	Phosphor bronze, plating: gold over nickel
Current / voltage rating	1.5 A / 125 VAC
Contact resistance	30 mΩ max.
Insulator resistance	1000 MΩ min.
Dielectrical withstanding	1000 VAC for 1 min
Durability	750 cycles
Operation temperature	-40 °C to +85 °C
Soldering	Lead free wave soldering process

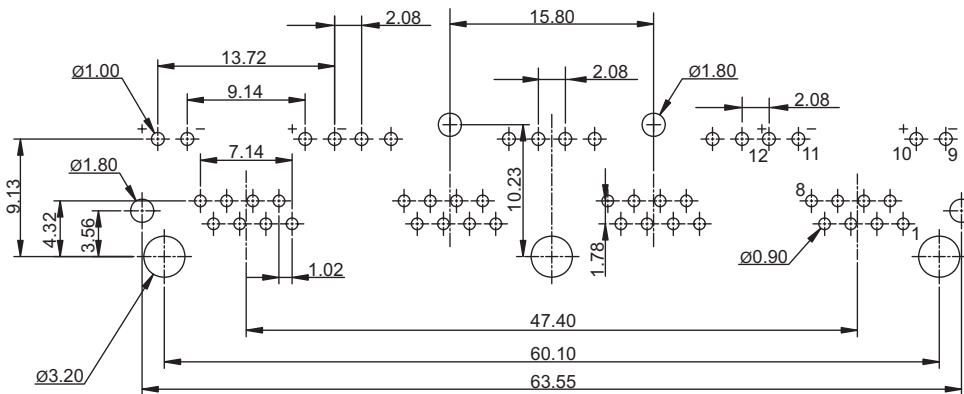
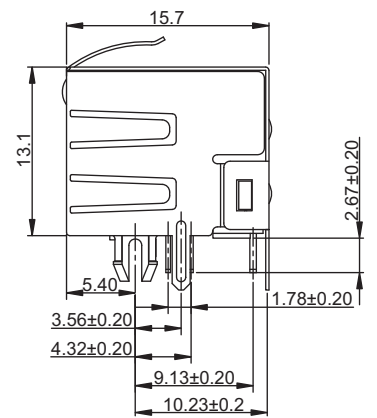
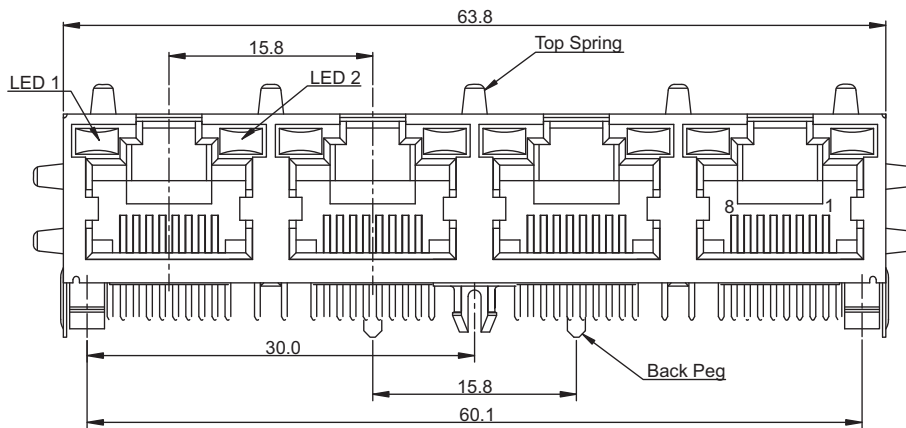
## Mating parts series



RoHS  
compliant

## Mechanical dimensions

Unit: mm



Recommended  
P.C.B. layout

continued on page 2

Tolerances	
Linear	X ± 0.20
	.XX ± 0.15
	.XXX ± 0.10

## Part numbering guide

6782	D	C	G	Y	0	0
Series	Ports D = 4 H = 8	Contact plating C = 3 μ" gold K = 50 μ" gold D = 6 μ" gold F = 15 μ" gold J = 30 μ" gold	Color LED1 D = Green/yellow G = Green R = Red Y = Yellow	Color LED2	Ground spring 0 = w/o spring 1 = Top spring 2 = Side spring 3 = Top and side spring	Back peg 0 = w/o pegs 1 = w/ 2 pegs

\* standard



