

# 5025 Series

# M.2 Mounting Nut

## General specifications

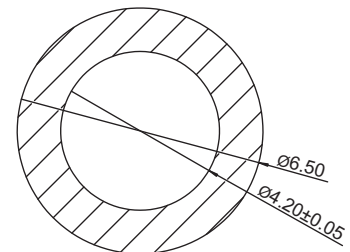
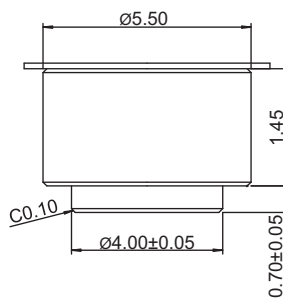
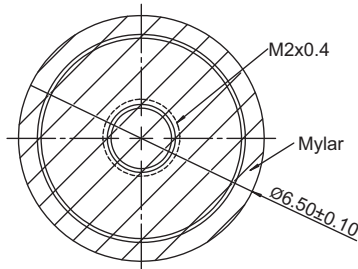
Standoff material	Brass
Mylar material	Polyimide film and silicone
Finish	Nickel underplating all over base material, matte tin plating over underplating
<b>Mating parts series</b>	
5024	



## Mechanical dimensions

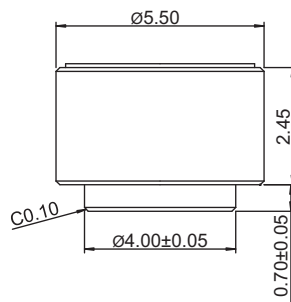
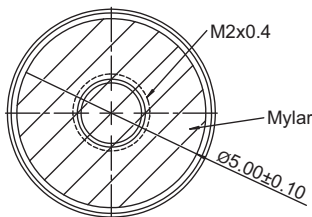
Unit: mm

5025M32R

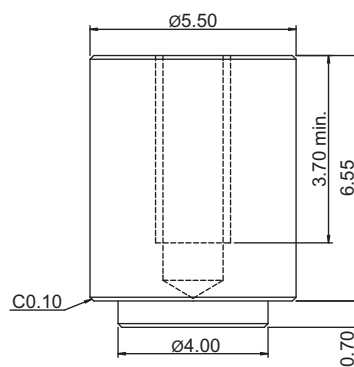
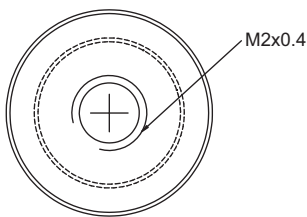


Recommended P.C.B. layout top view

5025M42R



5025M85R



## Part numbering guide

<b>5025 M</b>	<b>32</b>	<b>R</b>
Series M = Mounting nut	Height dimension 32 = 1.45 mm 42 = 2.45 mm 85 = 6.55 mm	Packing R = Reel

\* standard

