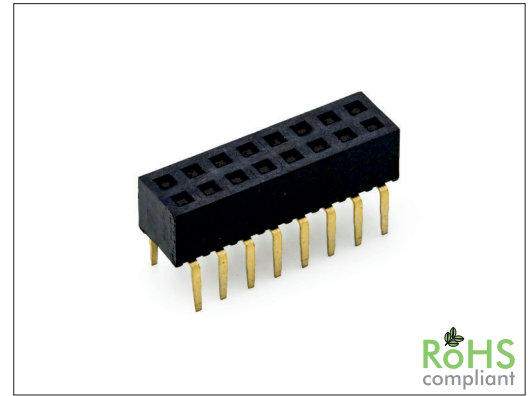


# 1375 Series

# 2.00 mm Female Header Dual Row Dual Entry

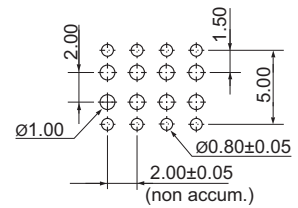
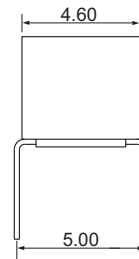
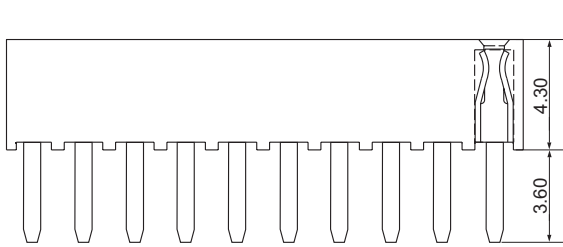
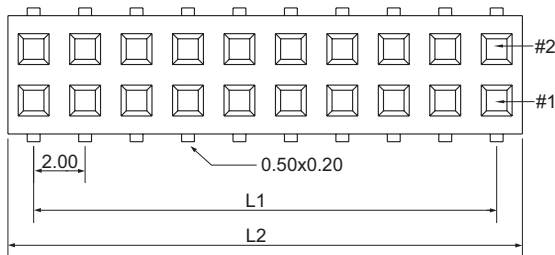
## General specifications

Insulator material	Nylon-6T, UL94V-0, color: black
Contact material	Phosphor bronze
Current rating	2 A
Contact resistance	20 mΩ max.
Insulator resistance	3000 MΩ min.
Dielectrical withstanding	500 VAC for 1 min
Operating temperature	-40 °C to 105 °C
Soldering	Lead free wave soldering process
<b>Mating parts series</b>	
1320, 1334, 1420, 1422, 1434, 1435	

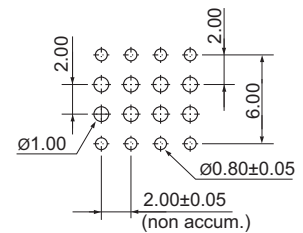
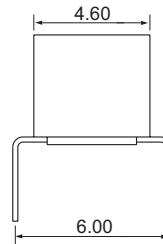
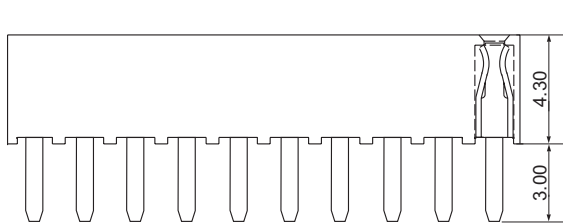


## Mechanical dimensions

Unit: mm



Recommended P.C.B layout  
5.00 mm row pitch



Recommended P.C.B layout  
6.00 mm row pitch

$$L1 = \left( \frac{\text{No. of contacts}}{2} - 1 \right) \times 2.00$$

$$L2 = \left( \frac{\text{No. of contacts}}{2} \right) \times 2.00 + 0.50$$

Tolerances		
Linear	.X	± 0.38
	.XX	± 0.25

## Part numbering guide

**1375 S** — **04** — **B** — **1**

Series  
S = THT straight

No. of contacts  
04 to 80

Contact plating  
B = Flashgold  
E = 10 μm gold  
F = 15 μm gold  
J = 30 μm gold

Row pitch  
1 = 5.00 mm  
2 = 6.00 mm

\* standard

