

# 1657 Series

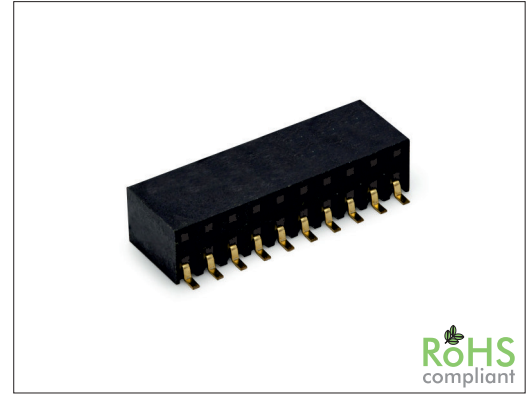
# 2.54 mm SMT Female Header Side Entry

### General specifications

Insulator material	Nylon 6T, UL94V-0
Contact material	Phosphor bronze
Current rating	3 A
Contact resistance	20 mΩ max.
Insulator resistance	5000 MΩ min.
Dielectrical withstanding	1000 VAC for 1 min
Operating temperature	-40 °C to +105 °C
Soldering	JEDEC lead free reflow soldering process

### Mating parts series

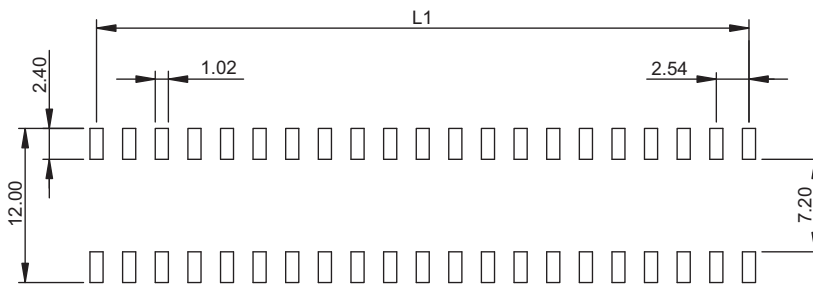
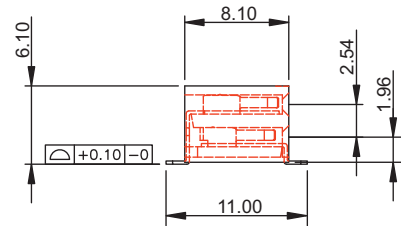
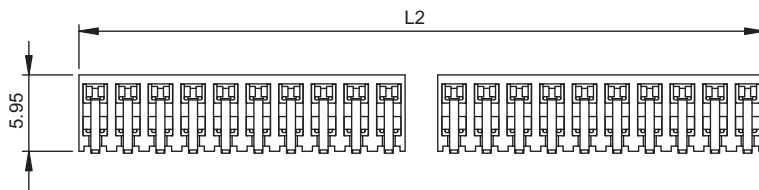
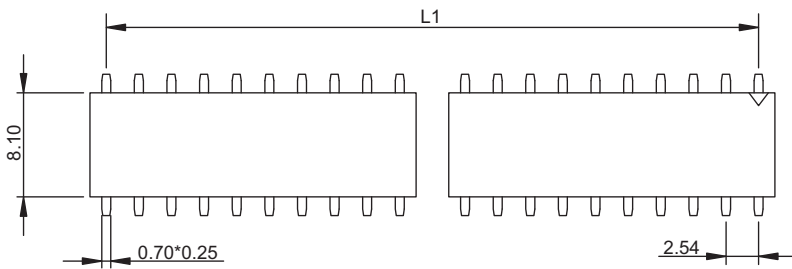
1520, 1525, 1534, 1620, 1622, 1634



RoHS  
compliant

### Mechanical dimensions

Unit: mm



Recommended P.C.B. layout

$$L1 = \left( \frac{\text{No. of contacts} \times 2.54}{2} \right) - 2.54$$

$$L2 = \frac{\text{No. of contacts} \times 2.54}{2}$$

Tolerances		
Linear	X	± 0.30
	.XX	± 0.20

### Part numbering guide

<b>1657 H</b>	<b>02</b>	<b>B</b>	<b>0</b>	<b>R</b>
Series H = SMT horizontal	No. of contacts 02 to 40	Contact plating B = Flashgold E = 10 μ" gold F = 15 μ" gold J = 30 μ" gold	Position peg 0 = w/o peg	Packing R = Reel T = Tube

\* standard

