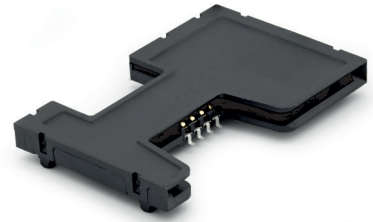


General specifications

Insulator material	High temperature thermoplastic, UL94V-0
Contact material	Phosphor bronze, plating: gold over nickel
Current rating	1 A
Voltage rating	30 V AC/DC
Contact resistance	100 mΩ max.
Insulator resistance	1000 MΩ @ 500 VDC
Dielectrical withstanding	500 VAC for 1 min
Operating temperature	-40 °C to +85 °C
Durability	100000 cycles
Soldering	JEDEC lead free reflow soldering process

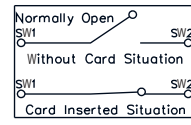
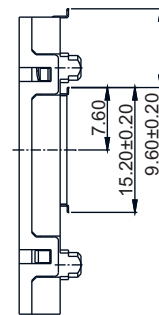
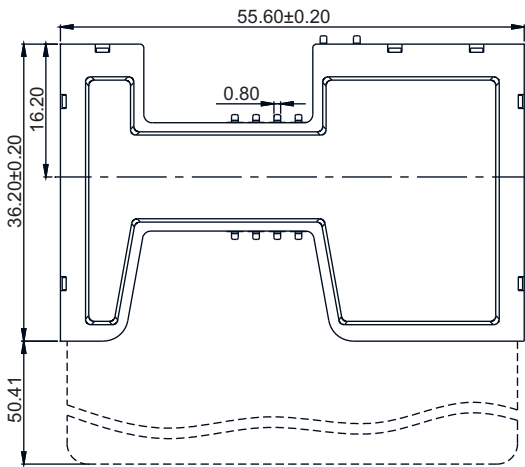
Mating parts series



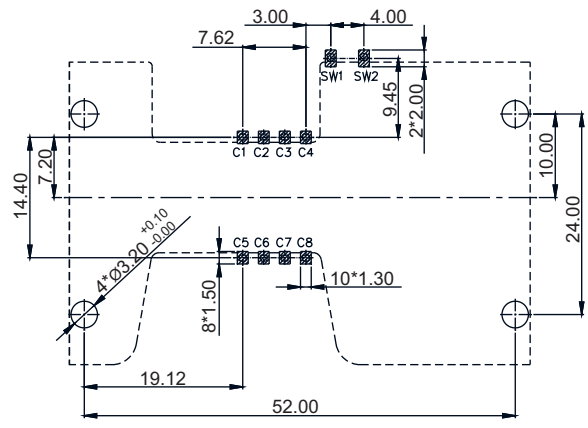
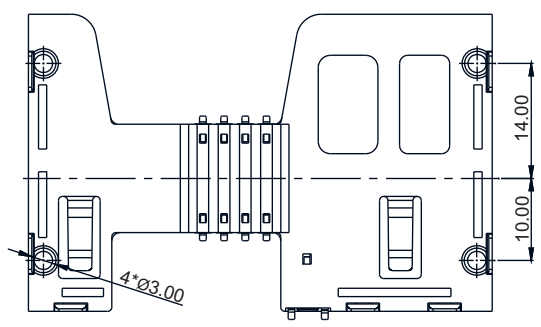
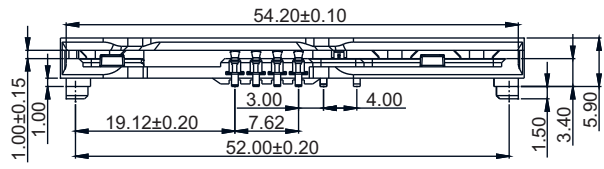
Mechanical dimensions

Switch type: blade
Operation: normally open

Unit: mm



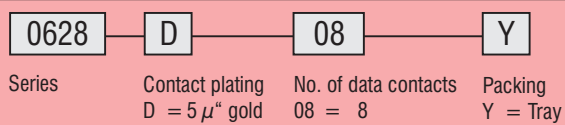
Contact No.	Assignment
C1	VCC
C2	RST
C3	CLK
C4	***
C5	GND
C6	VPP
C7	I/O
C8	***
Sw1	C/D
Sw2	GND



Recommended P.C.B. layout

Tolerances	
Linear	± 0.15

Part numbering guide



* standard

