

5927 Series

AC Inlet Socket, Snap-In

General specifications

Insulator material	Glass filled thermoplastic, UL94V-2 or UL94V-0, color: black
Contact material	Copper alloy
Current rating	2.5 A
Voltage rating	250 VAC
Contact resistance	50 mΩ max.
Insulator resistance	100 MΩ min. @ 500 VDC
Dielectrical withstanding	2000 VAC for 1 min
Operating temperature	-25 °C to +70 °C
Soldering	Lead free wave soldering process (Solder type only)

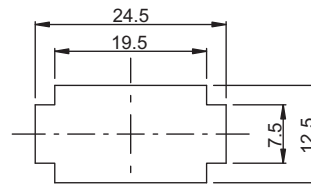
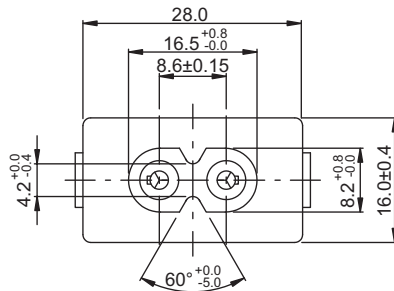
Mating parts series



RoHS
compliant

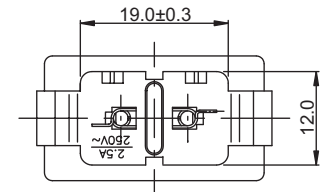
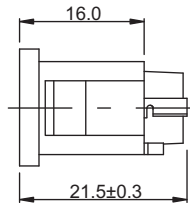
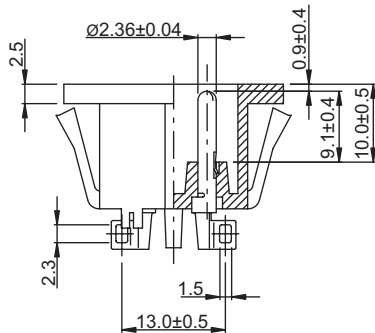
Mechanical dimensions

Unit: mm

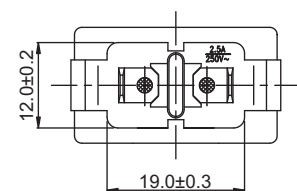
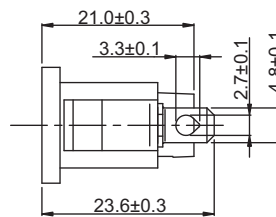
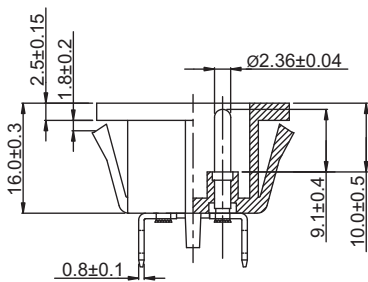


Recommended panel cut-out
Panel thickness see table

w/ solder terminal



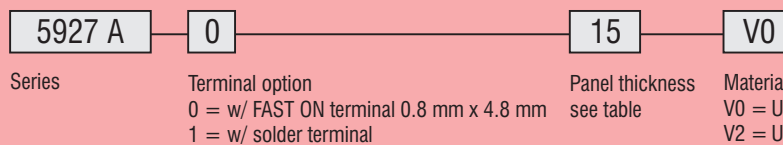
w/ FAST ON terminal



Tolerances		
Linear	X.X	± 0.1
	XX.XX	± 0.2

Panel thickness	
Index	Dimension
15	1.2 to 1.5

Part numbering guide



* standard

