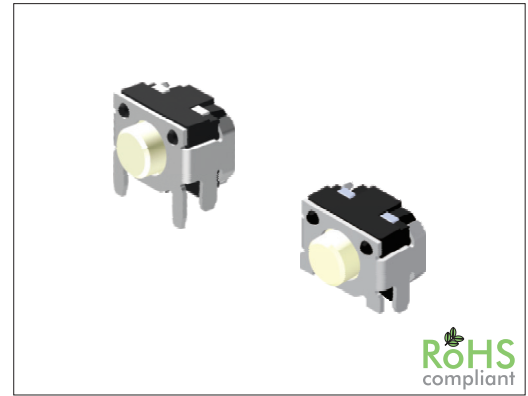


SW-TAFG Series SMT Tactile Switch 3.3 x 4.5 mm Side Push Type

General specifications

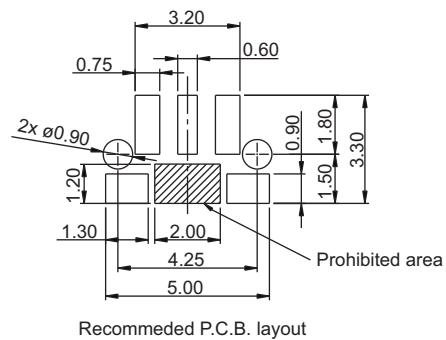
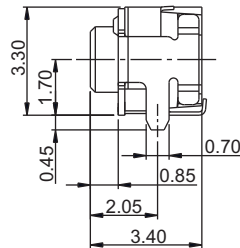
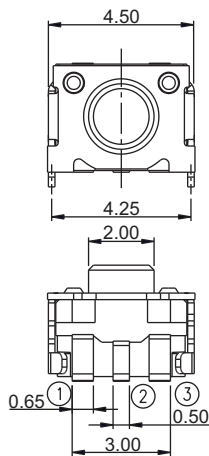
Housing material	High temperature plastic, UL94V-0, color: black
Actuator material	Rubber
Contact material	Stainless steel, plating: silver
Current rating	50 mA
Voltage rating	12 VDC
Contact resistance	500 mΩ max.
Insulator resistance	100 MΩ min. @ 100 VDC
Dielectrical withstanding	250 VAC for 1 min
Operating temperature	-40 °C to +85 °C
Operating force	see table
Durability	see table
Soldering	JEDEC lead free reflow soldering process



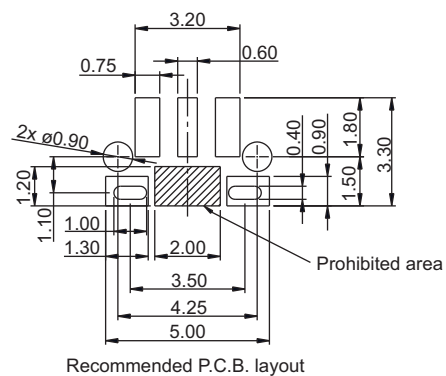
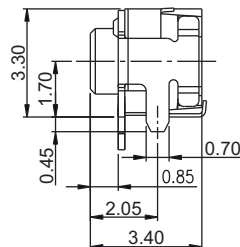
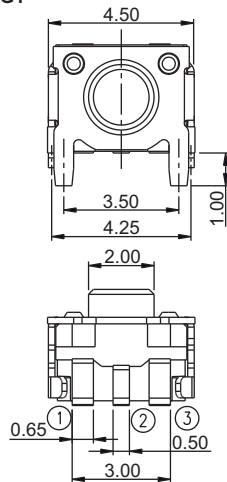
Mechanical dimensions

Unit: mm

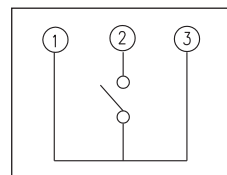
SW-TAFG



SW-TAFG1



Circuit



Tolerances	
Linear	± 0.20

Actuator specification			
Code	Operating force	Stroke	Durability
2	160±50 gf	0.20	100000 cycles
3	250±50 gf	0.20	100000 cycles

Part numbering guide

SW-TAFG	1	2	W	Q	R
Series SW-TAFG = w/o ground terminal SW-TAFG1 = w/ ground terminal	Size 1 = 3.3 x 4.5 mm	Actuator specification see table	Stem color W = White	Material Q = Halogen free	Packing R = Reel

* standard

