

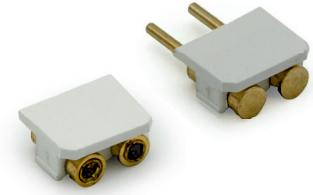
1988 Series

2.54 mm SMT Board to Board (for LED Stripe)

General specifications

Insulator material	High temperature plastic, UL94V-0
Contact material	Pin: copper alloy, Clip: beryllium copper
Current rating	3 A
Voltage rating	100 V AC/DC
Contact resistance	10 mΩ max.
Insulator resistance	1000 MΩ min.
Dielectrical withstanding	500 VAC for 1 min
Operating temperature	-55 °C to +125 °C
Durability	1000 cycles
Soldering	JEDEC lead free reflow soldering process

Mating parts series

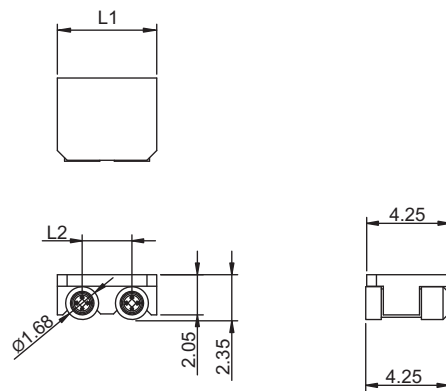


RoHS
compliant

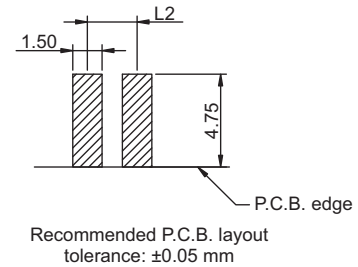
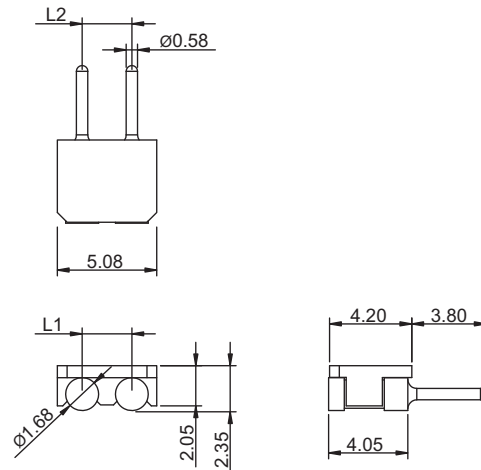
Mechanical dimensions

Unit: mm

1988-F



1988-M



Tolerances		
Linear	X	± 0.60
	.X	± 0.38
	.XX	± 0.25

L1 = No. of contacts * 2.54
L2 = (No. of contacts - 1) * 2.54

Part numbering guide

1988 F	02	B	WH	R
Series F = SMT female M = SMT male	No. of contacts 02 to 10	Contact plating B = Flashgold	Housing color WH = White BK = Black	Packing R = Reel

* standard

