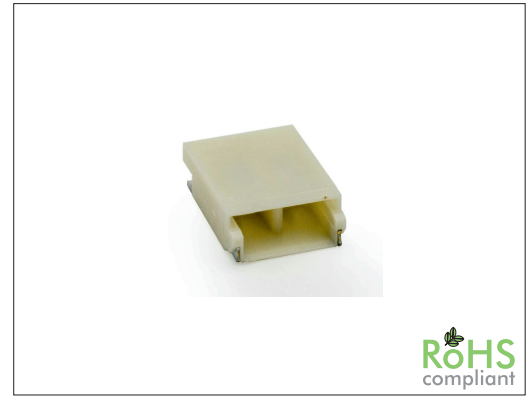


# 2350 Series

# 3.50 mm SMT / THT Header High Voltage

## General specifications

Insulator material	Nylon 6T w/ 30% glass fiber, UL94V-0, color: nature
Contact material	Brass, plating: tin
Current rating	1 A
Voltage rating	1400 V AC/DC
Contact resistance	10 mΩ max.
Insulator resistance	1000 MΩ min.
Dielectrical withstanding	3800 VAC for 1 min
Operating temperature	-25 °C to +85 °C
Soldering SMT	JEDEC lead free reflow soldering process
Soldering THT	Lead free wave soldering process
<b>Mating parts series</b>	
2350-P or cable assembly	

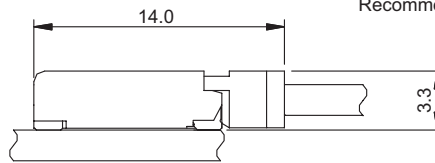
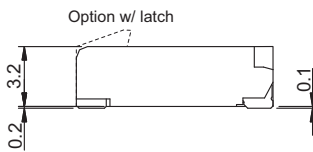
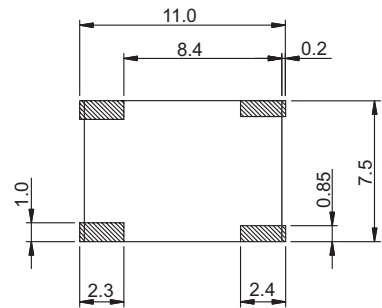
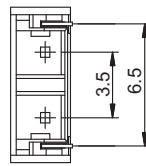
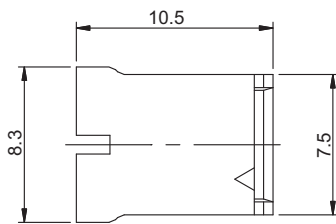


## Mechanical dimensions

Unit: mm

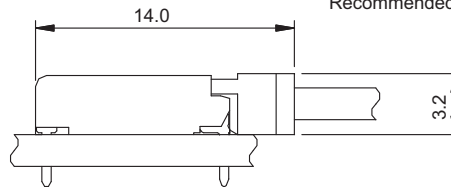
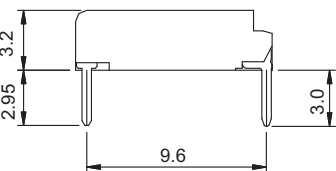
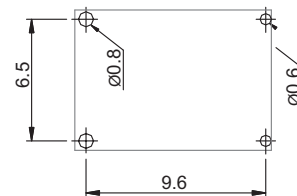
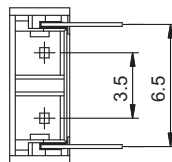
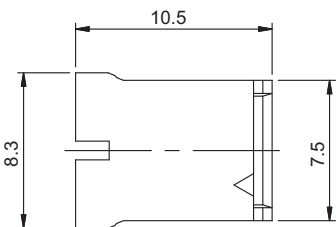
### 2350H

### 2350HL w/ latch



\*) please contact us for availability and actual drawing

### 2350R



Tolerances	
Linear	.X ± 0.38
	.XX ± 0.25

## Part numbering guide

<b>2350 H</b>	<b>02</b>	<b>T</b>	<b>R</b>
Series H = SMT horizontal HL = SMT horizontal w/ latch R = THT right angle RL = THT right angle w/ latch	No. of contacts 02	Contact plating T = Tin other plating on request	Packing R = Reel T = Tube

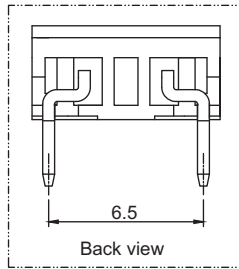
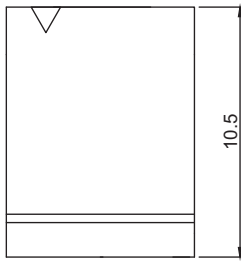
\* standard



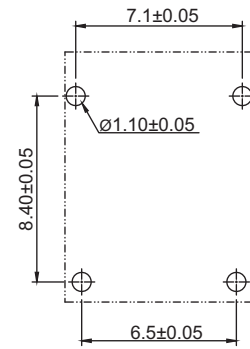
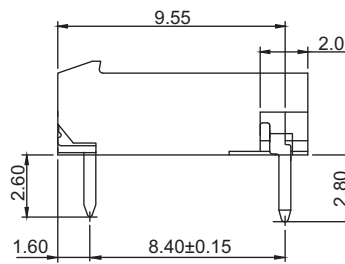
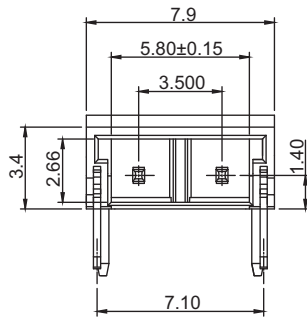
## Mechanical dimensions

Unit: mm

**2350RL**  
w/ latch



\*) please contact us for availability and actual drawing



Recommended P.C.B. layout

Tolerances		
Linear	.X	± 0.38
	.XX	± 0.25

