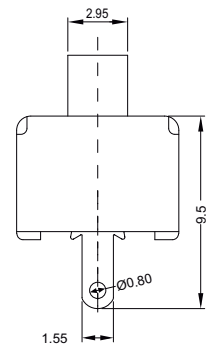
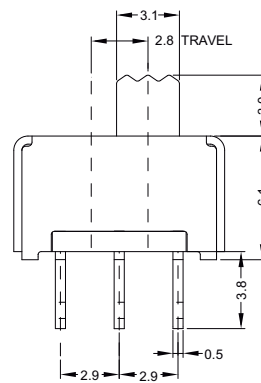
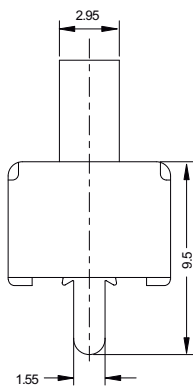
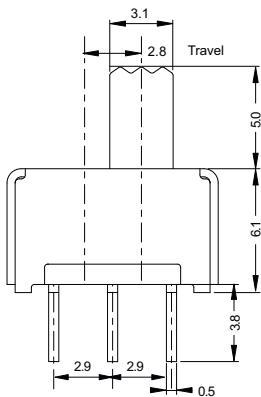
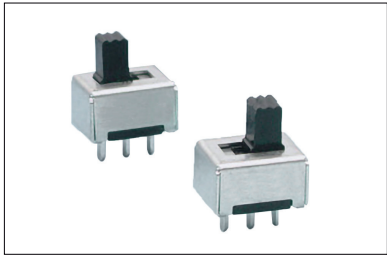
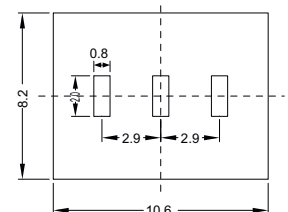
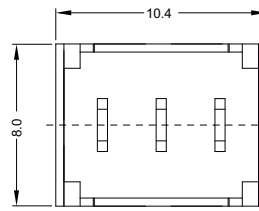
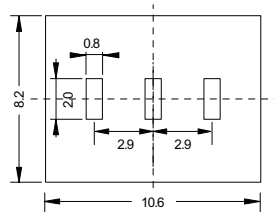
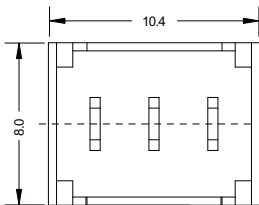


Specifications	
Contact rating	2 A @ 125 VAC, 1 A @ 250 VAC
Durability	10000 cycles
Contact resistance	20 mΩ max. initial
Insulator resistance	100 MΩ min.
Dielectrical withstanding	500 VAC
Operation temperature	-10 °C to +70 °C
Materials	
Bottom	Bakelite Board
Actuator	Nylon
Shell	SPCC, plating: tin
Contact and terminal	C1100 1/2H, plating: silver



P.C.B. layout



SW-SL-A-C-H

SW-SL-A1-B-H

Part numbering guide

