

2426 Series

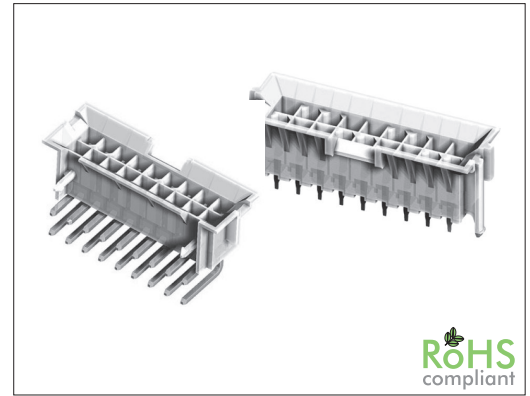
4.20 mm MF BMI Pin Header Dual Row

General specifications

Insulator material	Nylon 66
Contact material	Brass
Current rating	8 A (for 2 pins 9 A, for 8 to 10 pins 7A)
Voltage rating	600 V AC/DC
Contact resistance	10 mΩ max.
Insulator resistance	1000 MΩ min.
Dielectrical withstanding	1500 VAC for 1 min
Operating temperature	UL94V-0: -40 °C to +105 °C, UL94V-2: -25 °C to +85 °C
Soldering	Lead free wave soldering process

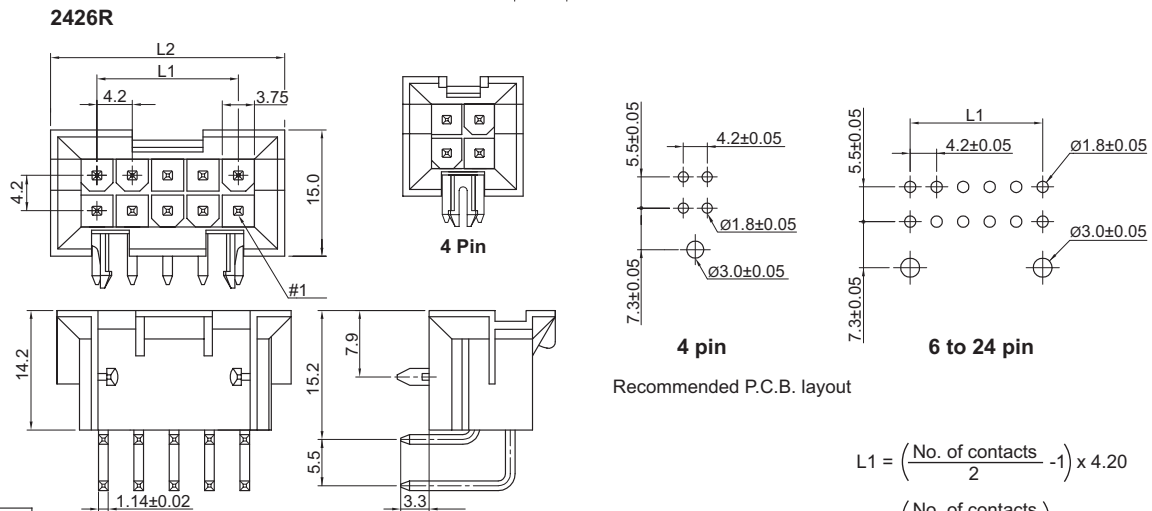
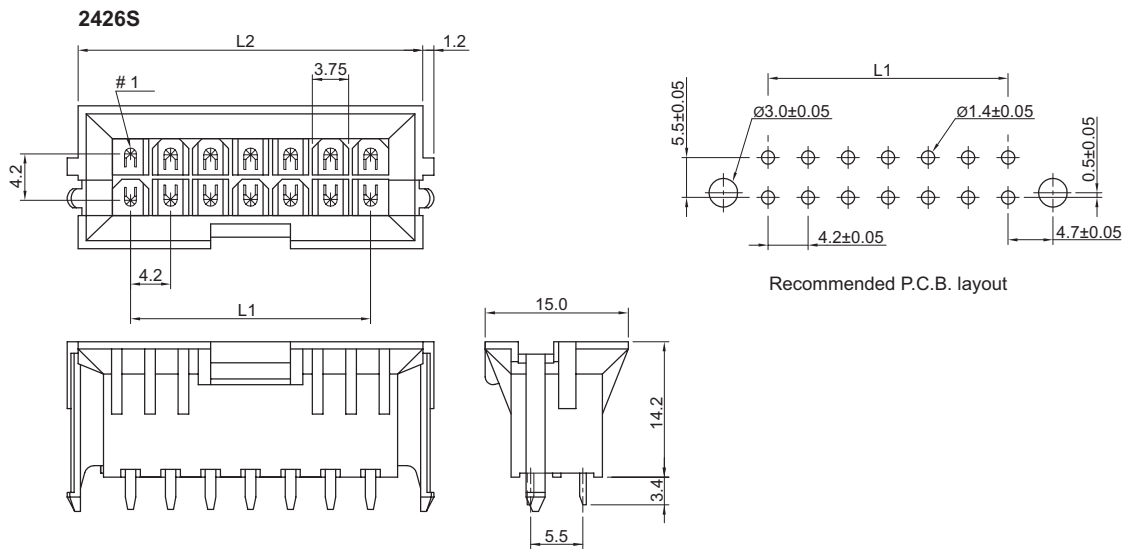
Mating parts series

2424-PD, 2424-F or cable assembly



Mechanical dimensions

Unit: mm



$$L1 = \left(\frac{\text{No. of contacts}}{2} - 1 \right) \times 4.20$$

$$L2 = \left(\frac{\text{No. of contacts}}{2} \right) \times 4.20 + 6.70$$

Tolerances	
Linear	X ± 0.38
	.XX ± 0.25

Part numbering guide



Series
S = THT straight
R = THT right angle

No. of contacts
04, 06, 10, 14,
18, 24

Contact plating
T = Tin

Material option
V2 = UL94V-2, color: nature
leave blank for UL94V-0, color: white

* standard

