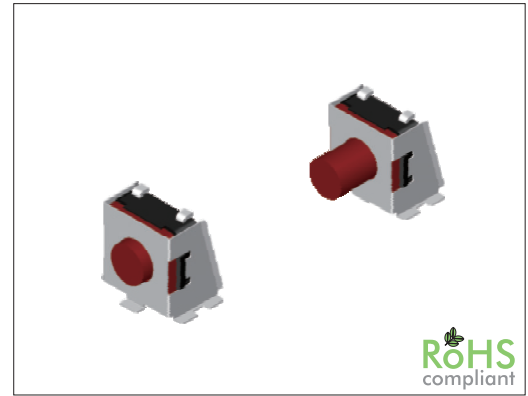


SW-TA6 Series

SMT Microswitch 6 x 6 mm Soft Steem Right Angle

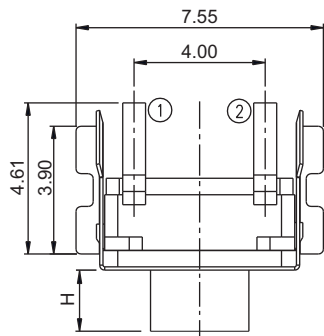
General specifications

Housing material	Nylon, UL94V-0, color: black
Actuator material	Sealed silicon, hardness 60° to 70°
Contact material	Stainless steel, plating: silver
Current / voltage rating	50 mA / 12 VDC
Contact resistance	100 mΩ max.
Insulator resistance	100 MΩ min. @ 500 VDC
Dielectrical withstanding	250 VAC for 1 min
Operating temperature	-25 °C to +70 °C
Operating force	see ordercode
Travel	0.45±0.20 mm
Durability	500000 cycles
Soldering	JEDEC lead free reflow soldering process

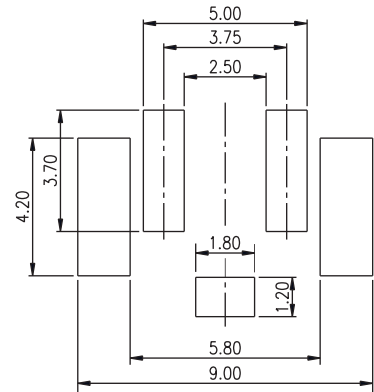
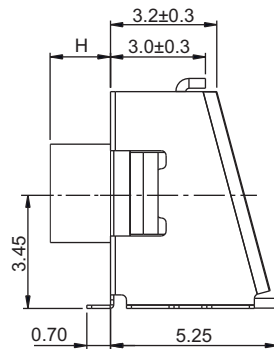
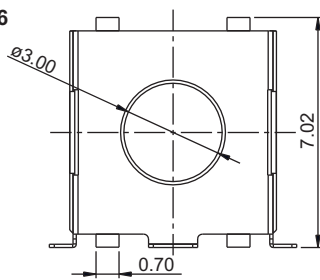


Mechanical dimensions

Unit: mm

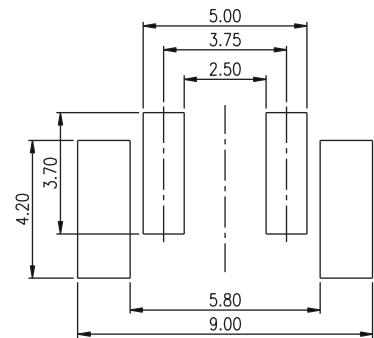
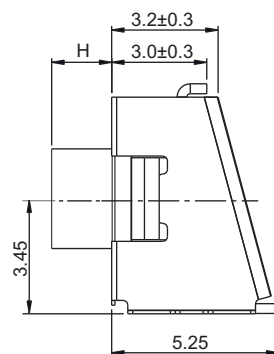
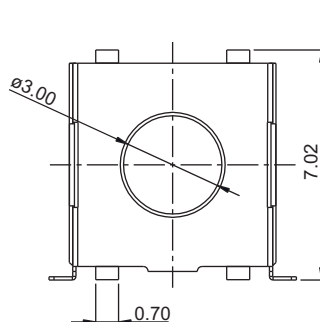


SW-TAS6



Recommended P.C.B. layout

SW-TA6



Recommended P.C.B. layout

Tolerances	
Linear	± 0.20

Part numbering guide

SW-TA6

Series
 SW-TA6 = standard
 SW-TAS6 = w/ front smd pad

00

Stem length H
 00 = 0.00 mm 23 = 2.35 mm
 08 = 0.80 mm 33 = 3.30 mm
 10 = 1.00 mm

N

Actuator color/operating force
 N = Brown, 180±50gf
 R = Red, 260±70gf

V

Material
 V = Lead free
 Q = Halogen free

TR

Packing
 TR = Reel
 (leave blanc for bag)

* standard

