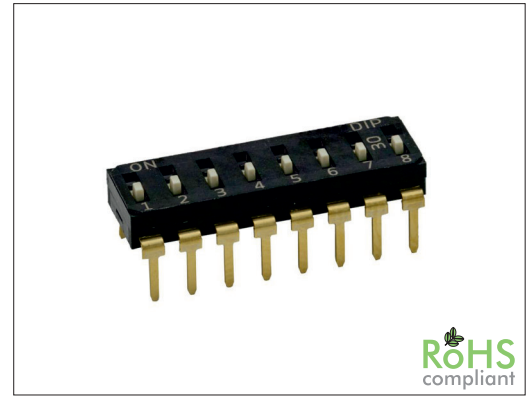


SW-EI/ES Series THT DIP Switch 2.54 mm

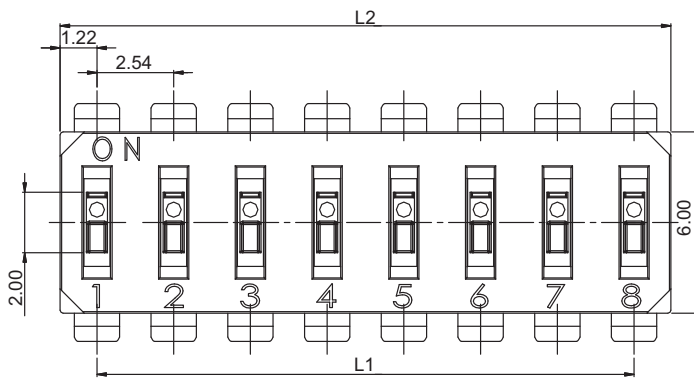
General specifications

Housing material	Nylon, UL94V-0, color: black
Actuator material	LCP, UL94V-0, color: white
Contact material	Copper alloy, plating: gold
Current rating	25 mA (switching), 100 mA (non-switching)
Voltage rating	24 VDC (switching), 50 VDC (non-switching)
Contact resistance	100 mΩ max.
Insulator resistance	100 MΩ min. @ 500 VDC
Dielectrical withstanding	500 VAC for 1 min
Operating temperature	-20 °C to +85 °C
Operating force	1000 gf max.
Durability	2000 cycles
Soldering	Lead free wave soldering process

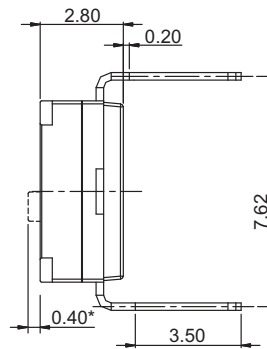


Mechanical dimensions

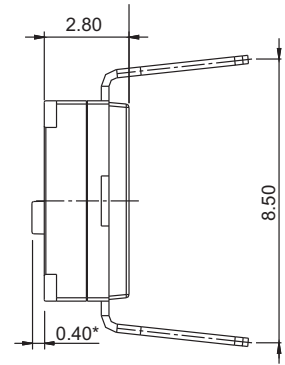
Unit: mm



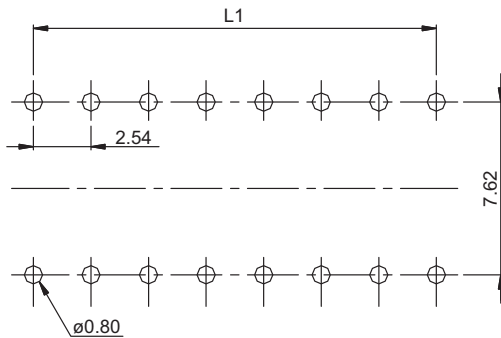
Straight contacts



Splayed contacts



* Raised actuator only



Recommended P.C.B. layout

L1 = No. of positions x 2.54 - 2.54
L2 = No. of positions x 2.54 - 0.10

Tolerances	
Linear	± 0.20

Part numbering guide

SW-ES

Series
 SW-EI = Straight contacts, raised actuator
 SW-EIR = Straight contacts, recessed actuator
 SW-ES = Splayed contacts, raised actuator
 SW-ESR = Splayed contacts, recessed actuator

01

No. of positions
 01 to 10, 12

T

Optional tape sealed
 T = Top tape sealed* (not available for raised actuator 1 to 3 positions)
 (leave blank for not tape sealed)

Q

Material
 Q = Halogen free

Packing
 Tube

* standard

