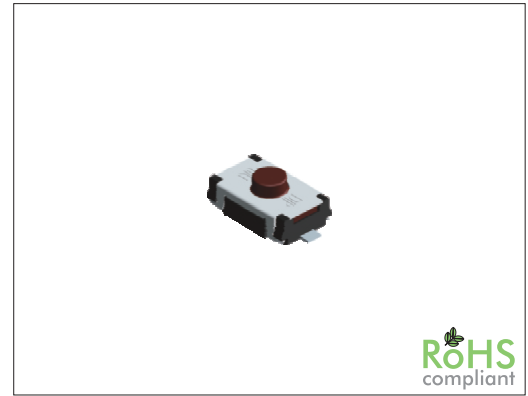


SW-TAEF Series SMT Tactile Switch 3.8 x 6.0 mm

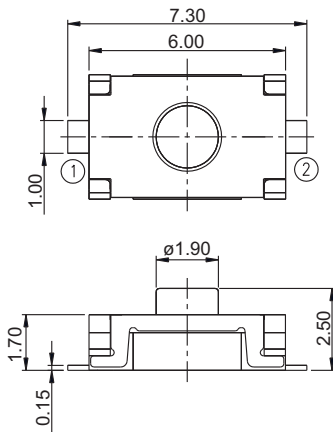
General specifications

Housing material	LCP, UL94V-0, color: black
Actuator material	Rubber
Contact material	Phosphor bronze
Current rating	50 mA
Voltage rating	12 VDC
Contact resistance	100 mΩ max.
Insulator resistance	100 MΩ min. @ 500 VDC
Dielectrical withstanding	300 VAC for 1 min
Operating temperature	-40 °C to +85 °C
Operating force	see table
Durability	see table
Soldering	JEDEC lead free reflow soldering process

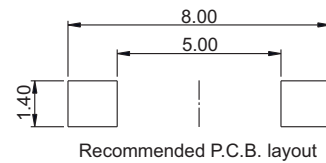
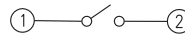


Mechanical dimensions

Unit: mm



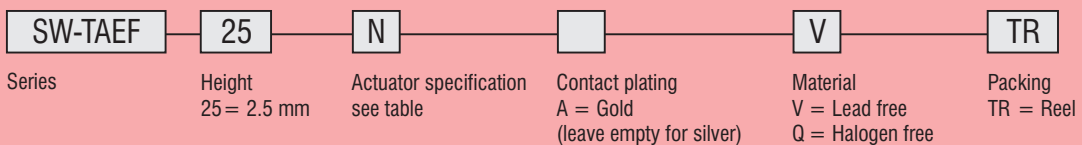
Circuit



Tolerances	
Linear	± 0.20

Actuator specification				
Code	Color	Operating force	Stroke	Durability
N	Brown	200 gf	0.30	200000 cycles
R	Red	300 gf	0.35	200000 cycles
S	Salmon	450 gf	0.45	100000 cycles

Part numbering guide



* standard

