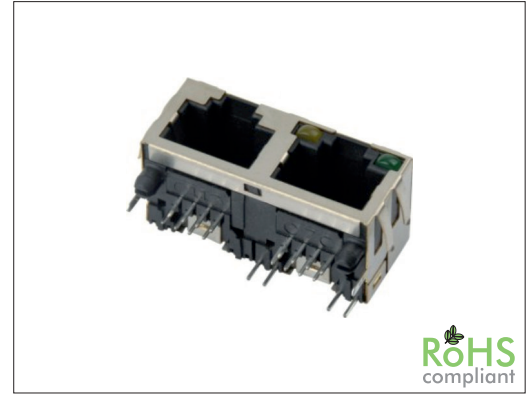


# 67723 Series Dual Port RJ45 8P LED Side Entry Shielded

## General specifications

Insulator material	High temperature plastic, UL94V-0
Contact material	Phosphor bronze, plating: gold over nickel
Current / voltage rating	1.5 A / 125 VAC
Contact resistance	30 mΩ max
Insulator resistance	1000 MΩ min.
Dielectrical withstanding	1000 VAC for 1 min
Durability	750 cycles
Operation temperature	-40 °C to +85 °C
LED Rating	Forward 2.2 V / reverse 5 V
Soldering	Lead free wave soldering process

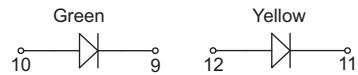
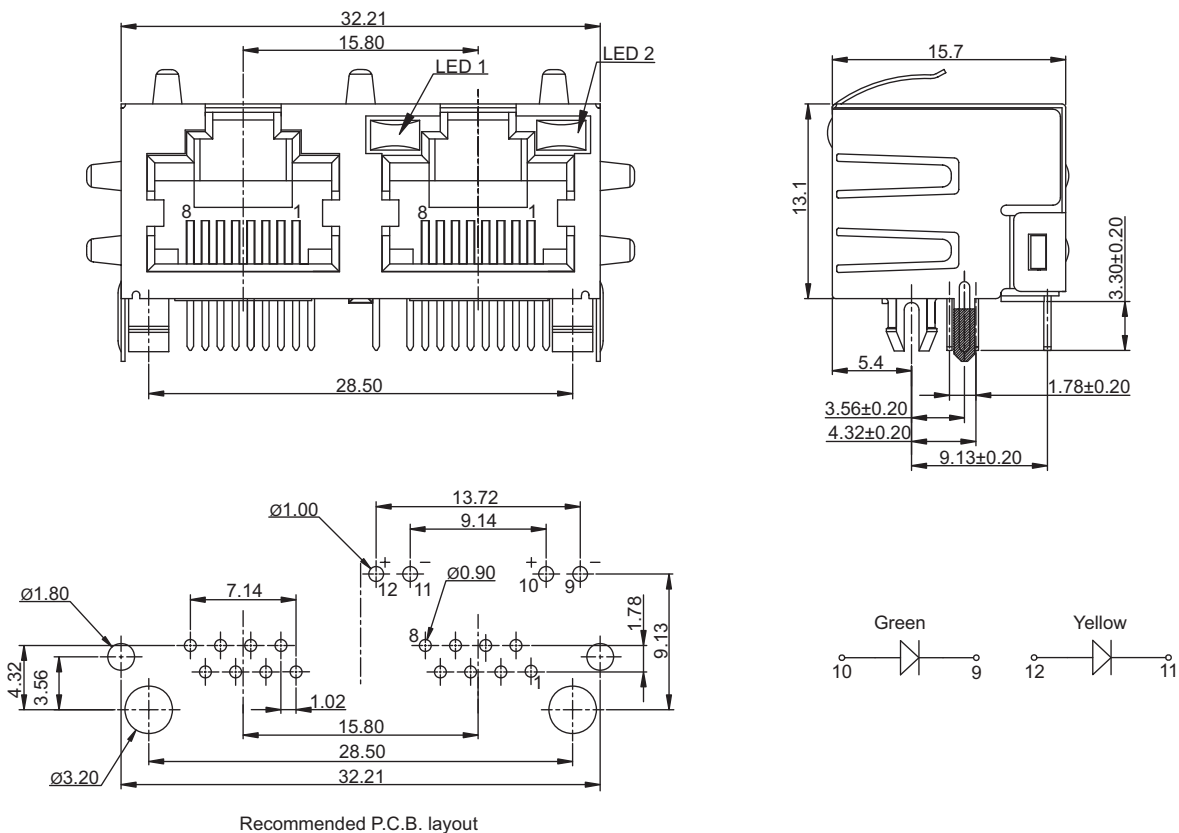
## Mating parts series



RoHS  
compliant

## Mechanical dimensions

Unit: mm



Tolerances		
Linear	X.	± 0.20
	X	± 0.15
	.XX	± 0.10

## Part numbering guide

<b>67723</b>	<b>C</b>	<b>G</b>	<b>Y</b>	<b>0</b>
Series	Contact plating C = 3 μ" gold K = 50 μ" gold D = 6 μ" gold F = 15 μ" gold J = 30 μ" gold	Color LED1 D = Green/yellow G = Green R = Red Y = Yellow	Color LED2	Ground spring 0 = w/o spring 1 = Top spring 2 = Side spring 3 = Top and side spring

\* standard

