

### General specifications

Insulator material	Nylon UL94V-0, color: black
Contact material	Copper alloy, plating: gold
Nut/Screw material	Copper alloy, plating: nickel
Current rating, voltage rating	see table
Contact resistance	10 mΩ max.
Insulator resistance	100 MΩ min.
Dielectrical withstanding	see table
Operating temperature	-25 °C to +80 °C
IP-Rating	IP 65
Soldering	Lead free wave soldering process

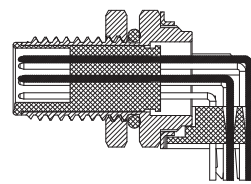
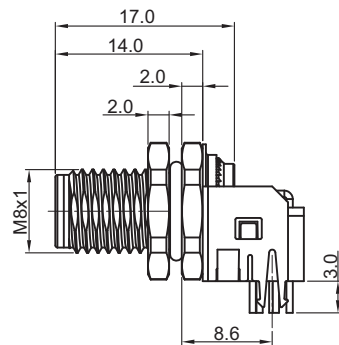
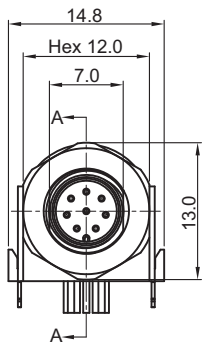
### Mating parts series



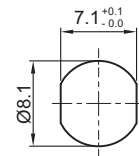
### Mechanical dimensions

Unit: mm

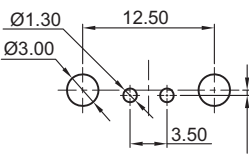
5623P



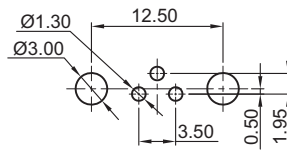
Section A-A



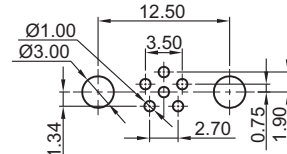
Recommended panel cut-out thickness 3.5 max.



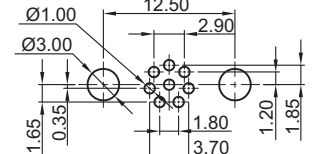
Recommended P.C.B. layout 2 pin



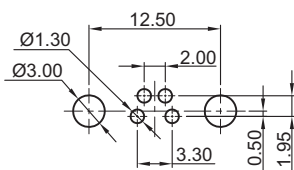
Recommended P.C.B. layout 3 pin



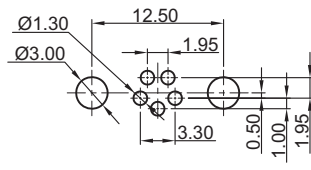
Recommended P.C.B. layout 6 pin



Recommended P.C.B. layout 8 pin



Recommended P.C.B. layout 4 pin



Recommended P.C.B. layout 5 pin

### Pin assignments front view

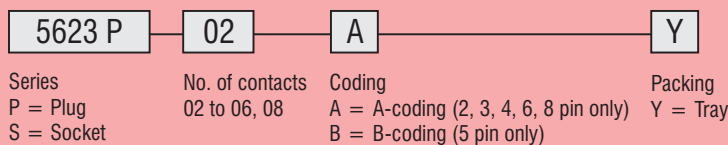
	2 pin	3 pin	4 pin	6 pin	8 pin
A-coding					
B-coding					

continued on page 2

### Tolerances

Linear	X	± 0.2
	XX	± 0.15
	XXX	± 0.10

### Part numbering guide



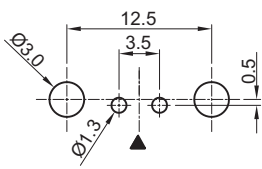
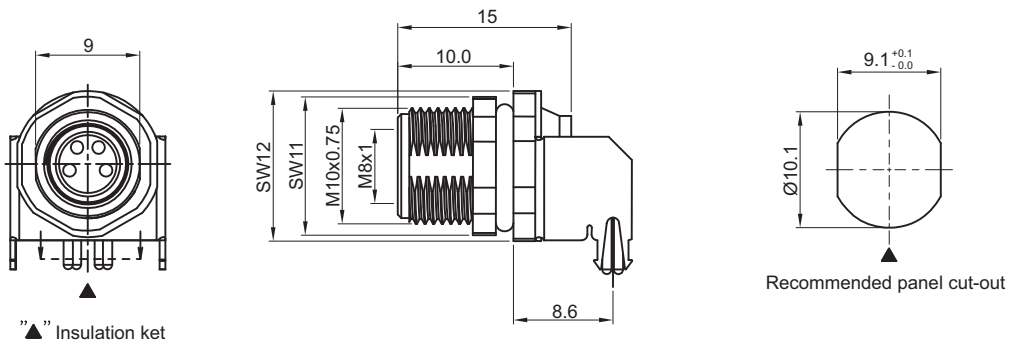
\* standard



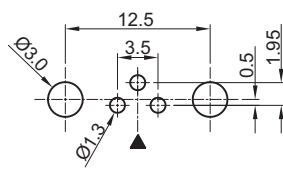
Mechanical dimensions

Unit: mm

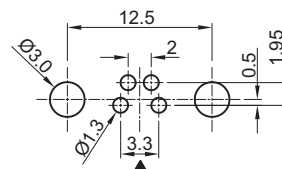
5623S



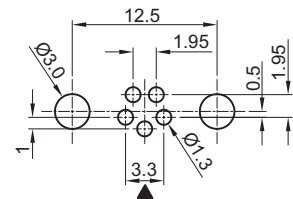
Recommended P.C.B. layout  
2 pin



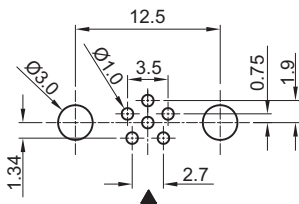
Recommended P.C.B. layout  
3 pin



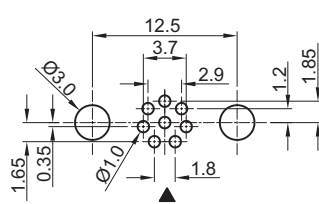
Recommended P.C.B. layout  
4 pin



Recommended P.C.B. layout  
5 pin



Recommended P.C.B. layout  
6 pin



Recommended P.C.B. layout  
8 pin

Tolerances		
Linear	X	± 0.2
	XX	± 0.15
	.XXX	± 0.10

Pin assignments front view					
A-coding	2 pin	3 pin	4 pin	6 pin	8 pin
B-coding					

